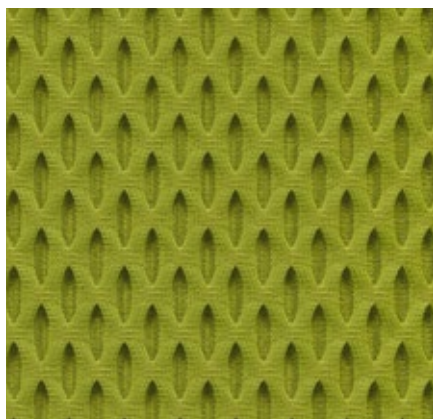


Diamond Mesh

Home/Office



Diamond Mesh is a technical spacer fabric with a three-dimensional honeycomb structure. The hollow cells in the hexagonal structure facilitate air circulation and ensure comfortable thermal conditions. These characteristics, combined with the technical, yet vibrant look of this robust knit, make it an excellent choice for office settings.

Diamond Mesh is available in 9 colours.

Material	100% polyester
Weight	600 g/m ² (17.7 oz/y ²)
Width	165 cm (64")
Abrasion resistance	45,000 Martindale
Fastness to light	Type 6
Pilling	Grade 4-5
Fastness to rubbing	Grade 4-5 dry and wet

ID Mesh
Unix Chair

Diamond Mesh



24
soft grey



21
dim grey



79
ice grey



67
asphalt



68
avocado



66
nero



71
mauve grey



54
brown



77
brick